

Bring us your talent.

# GM STEP Marketing Field Kit

We know how important recruiting technicians into your dealership is to you and your business.

These marketing materials have been created to help you support the educational opportunities for the next generation of General Motors Dealership Technicians.

Updated September 2023

[Click to download full  
suite of assets here](#)



CUSTOMER CARE  
& AFTERSALES

# TABLE OF CONTENTS

- ➔ What Is GM STEP?
- ➔ Dealer Opportunities
- ➔ Program Benefits
- ➔ Best Practices
- ➔ Available Assets
- ➔ GM Asset Central Instructions
- ➔ Get Started
- ➔ Enrollment Form



Bring us your talent.

# What Is GM STEP?

By leveraging GM Center of Learning resources, GM STEP provides critical pathways for students to enter the automotive technician field. GM Dealers are the conduit to connect local schools to the Center of Learning, providing students/instructors access to GM-specific technical training courses.



## HIGH SCHOOL

The curriculum covers fundamentals and upon successful completion, the student can be classified as a **Maintenance Inspection Technician (MIT)**.



## COLLEGE

The curriculum covers fundamentals, electrical/electronics, brakes, and steering/suspension. Upon successful completion, the student can be classified as an around-the-wheel **Maintenance Light Repair (MLR) Technician**.

# Dealer Opportunities

## Dealers outside a GM ASEP school area

- Local schools must be ASE Education Foundation-accredited. Dealer to assist in the ASE accreditation process if needed.
- Dealer facilitates connection between the school and GM's Center of Learning
- Dealer provides job shadowing and mentoring for student at the dealership
- Dealer may offer internships and employment opportunities
- Dealers can adopt a school. Click [here](#) to learn more and get started

## Dealers within a GM ASEP school area

- Only accredited high schools within a GM ASEP area are eligible for STEP
- Dealers and the GM ASEP school are to provide support to the local high school
- Dealers are expected to encourage STEP high school graduates to participate in GM ASEP and sponsor them. This helps students earn their associate degree.



Bring us your talent.

 CUSTOMER CARE  
& AFTERSALES

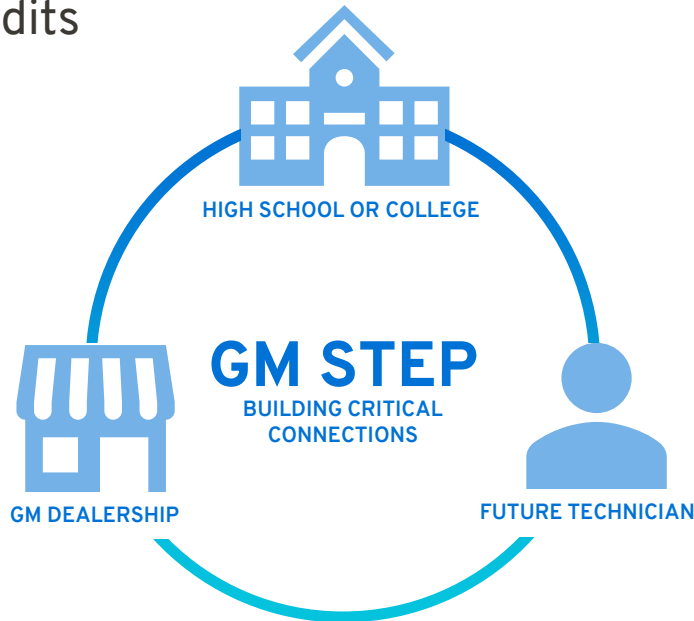
# Locate An ASE Foundation School

This gives you a step-by-step guide on how to locate an ASE foundation accredited school in your area. The ASE Education Foundation strives to uphold quality and excellence in automotive service. It accredits qualified educational programs in schools (secondary and post-secondary) through its [5-Step Process](#) and offers [student career development](#).

1. Type in <https://www.aseeducationfoundation.org/>
2. Click on [Find a Program](#)
3. Unclick on All Series
4. Click on Location
5. Type in your Zip Code
6. Click on Find
7. This will give you a list of Accredited Schools with ASE Foundation.

# GM Dealership Benefits

- Build critical relationships with school communities and impressionable students
- Create a platform to dispel myths and drive interest in the career
- Opportunity to hire entry-level technicians who have GM training credits



## Benefits for Student and School

- Build relationship with GM Dealership
- Gain access to complimentary web-based GM training
- Receive GM Center of Learning course credit
- Quality preparation to enter career as entry-level technician
- Potential employment opportunities

Bring us your talent.

# Best Practices

It is crucial to begin engaging and recruiting future technicians by promoting the career to students at the middle and high school levels. How can you help? Ultimately, it is about getting involved in your local community and building relationships with students, parents and educators.

## Know and engage your local schools – consider collaborating with them to enroll in GM STEP

- Work with your Zone Team and ASE Education Foundation area representative to identify local accredited schools to begin the enrollment process
- Leverage information provided by ASE Education Foundation by visiting [aseeducationfoundation.org/adoptaschool](https://aseeducationfoundation.org/adoptaschool)
- Have your manager(s) join and support school advisory boards
- Offer to present at school assembly events
- Work with school guidance counselors in presenting facts about dealership technician careers as a viable career path to students and parents
- Host and schedule Dealer Days or job fairs
- Support school by donating components and tools when available

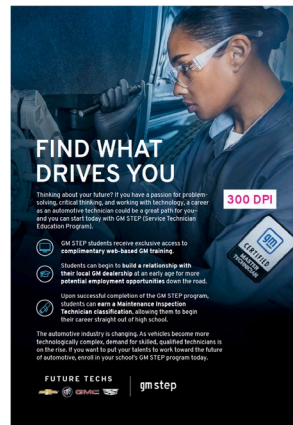
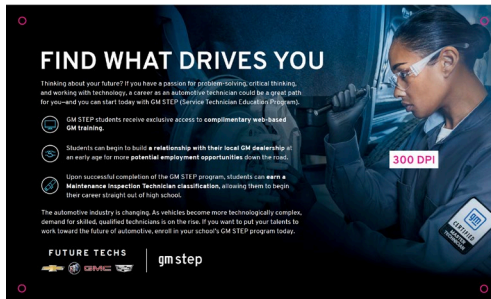
**Use advertising materials referenced in this guide** to accompany your presentation with local schools and educators.



# Available STEP Assets

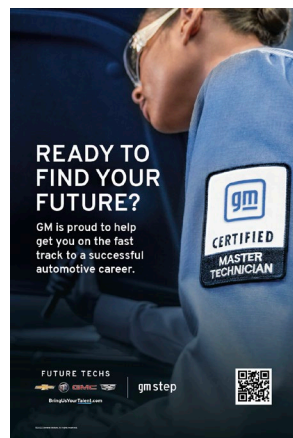
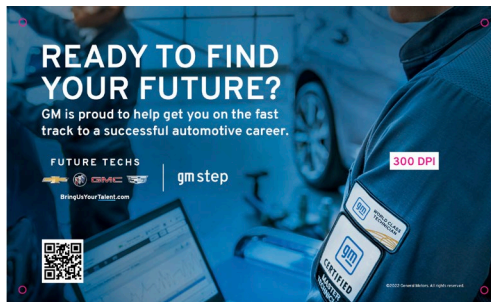
## GM STEP Program Poster & Banner

Utilize these poster and banner assets to highlight the benefits that GM STEP can bring to a local school's automotive program. Designed to be placed within a GM STEP high school, these assets can help draw attention to automotive education classes.



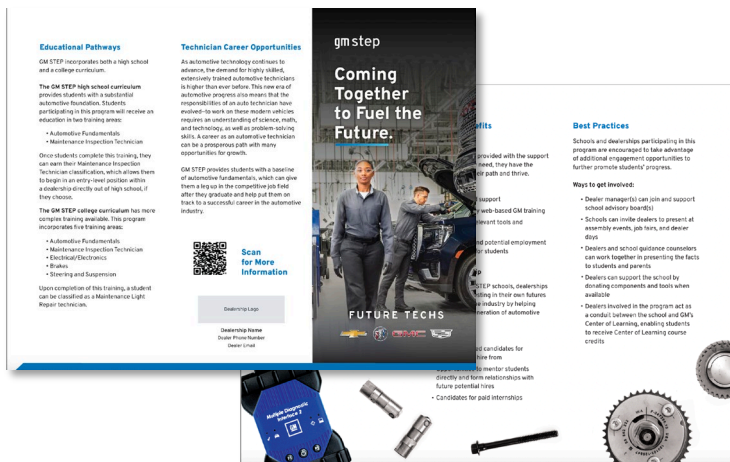
## GM STEP Classroom Poster & Banner

Designed to be used within a GM STEP classroom, this poster and banner will help to bring General Motors front-of-mind when a student is considering an automotive career. With a link to BringUsYourTalent.com, the student can learn about the great career being an GM Dealership Technician provides.



## GM STEP Tri-Fold Brochure

The GM STEP Tri-Fold Brochure is designed to help engage conversation between high-school decision makers and your dealership field team. As a dedicated leave-behind piece, these brochures will help to persuade local school in adopting the GM STEP program for their automotive classrooms.



\*Contact your Field Technician Specialist for support

Bring us your talent.

**gm** CUSTOMER CARE & AFTERSALES



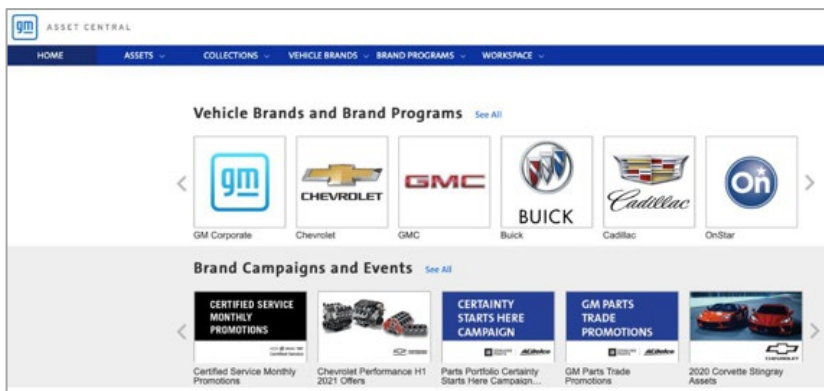
# Use GM Asset Central to download assets

All assets within this kit are available on GM Asset Central for download. Each thumbnail has been linked directly to the asset on GM Asset Central. Either click on the thumbnail or follow instructions below.

1. Log in to [gmassetcentral2.com](https://gmassetcentral2.com).
2. Navigate to [Technician Recruitment Assets](#) in the “Brand Campaigns and Events” section and click the thumbnail to be linked directly to the downloadable assets.
3. Once in the [Technician Recruitment Assets](#) folder, select which file you want and click the download button.
4. To download multiple files at once, check the box in the upper-left corner for each asset you want and then select “Download.”

If you need assistance in locating available assets, contact the Leo Burnett Asset Management Team at [assetrequests@leoburnett.com](mailto:assetrequests@leoburnett.com).

For technical questions, please contact the Asset Central Help Desk via email at [GMAssetCentralSupport@assetSERV.com](mailto:GMAssetCentralSupport@assetSERV.com) or call toll-free 877.277.2948.



Bring us your talent.

 CUSTOMER CARE & AFTERSALES

# GET STARTED

- Request a GM STEP enrollment form from your Regional Training Manager or Zone Team representative. The enrollment form can also be found at [gmstc.com](http://gmstc.com) by navigating to Educational Programs and selecting GM STEP in the drop-down.
- Connect with local school(s), introduce them to GM STEP, and confirm the school is ASE-accredited. Collaborate with the ASE Education Foundation to accredit school as needed. Visit [aseeducationfoundation.org](http://aseeducationfoundation.org).
- School to complete the [GM STEP enrollment form](#)
- Submit completed digital enrollment form to Zone Team for review
- Zone Team to submit enrollment form to [anthony.t.ratkowiak@gm.com](mailto:anthony.t.ratkowiak@gm.com)

**SERVICE TECHNICAL COLLEGE** Service Technician Education Program (STEP) Enrollment Form

School must be accredited with the ASE Education Foundation to be eligible

**School Information**  
School's Name: Click or tap here to enter text.  
Street Address: Click or tap here to enter text.  
City: Click or tap here to enter text.  
State: Click or tap here to enter text.  
Zip Code: Click or tap here to enter text.

**Instructor's Information**  
Instructor's Name: Click or tap here to enter text.  
Phone #: Click or tap here to enter text.  
Email: Click or tap here to enter text.

**GM Dealer Information**  
Dealer Name: Click or tap here to enter text.  
Street Address: Click or tap here to enter text.  
Dealer BAC: Click or tap here to enter text.  
City: Click or tap here to enter text.  
State: Click or tap here to enter text.  
Zip Code: Click or tap here to enter text.

**Dealer Point of Contact (POC) Information**  
POC Name: Click or tap here to enter text.  
POC GM#: Click or tap here to enter text.  
POC Email: Click or tap here to enter text.  
POC Phone: Click or tap here to enter text.

**Zone Team Point of Contact (POC) Information**  
POC Name: Click or tap here to enter text.  
POC Email: Click or tap here to enter text.  
Zone: Click or tap here to enter text.  
District: Click or tap here to enter text.

**ASE Education Foundation Representative Point of Contact (POC) Information**  
POC Name: Click or tap here to enter text.  
POC Email: Click or tap here to enter text.  
POC Phone: Click or tap here to enter text.

Please submit form to: [anthony.t.ratkowiak@gm.com](mailto:anthony.t.ratkowiak@gm.com)

Bring us your talent.

